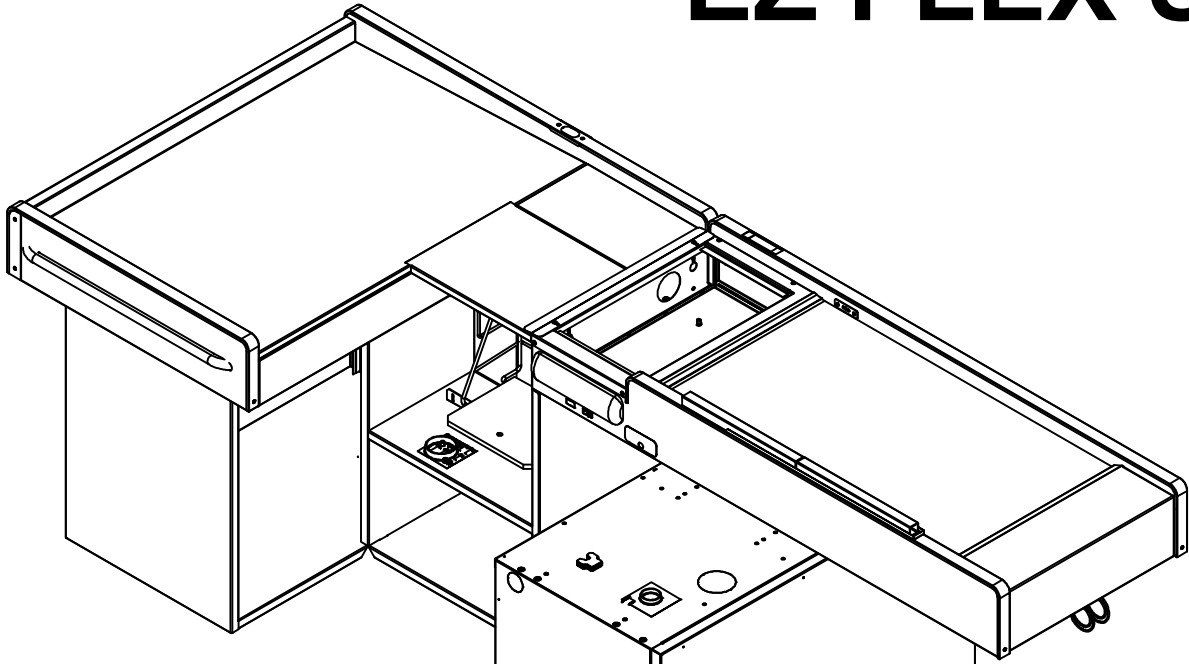
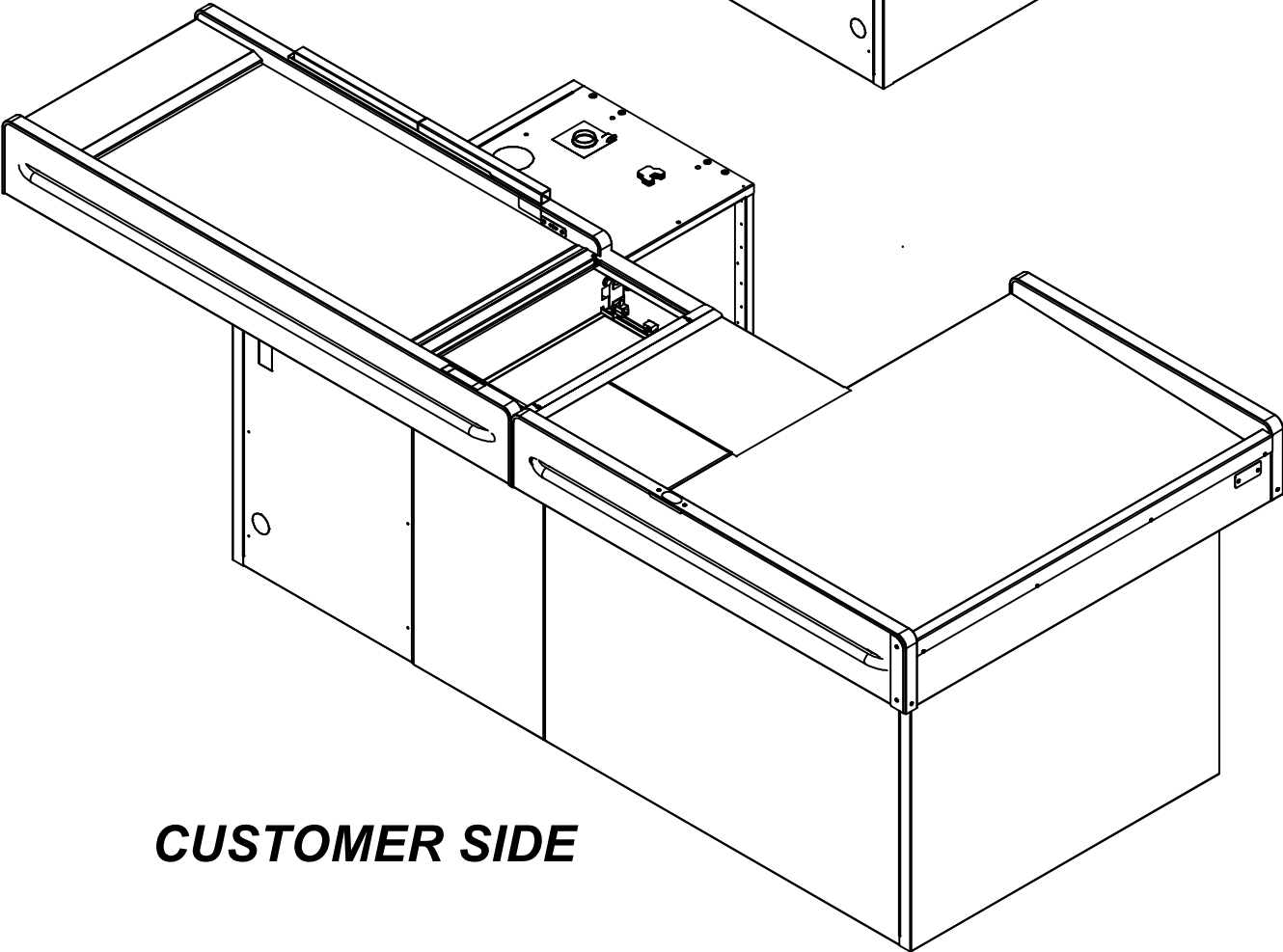


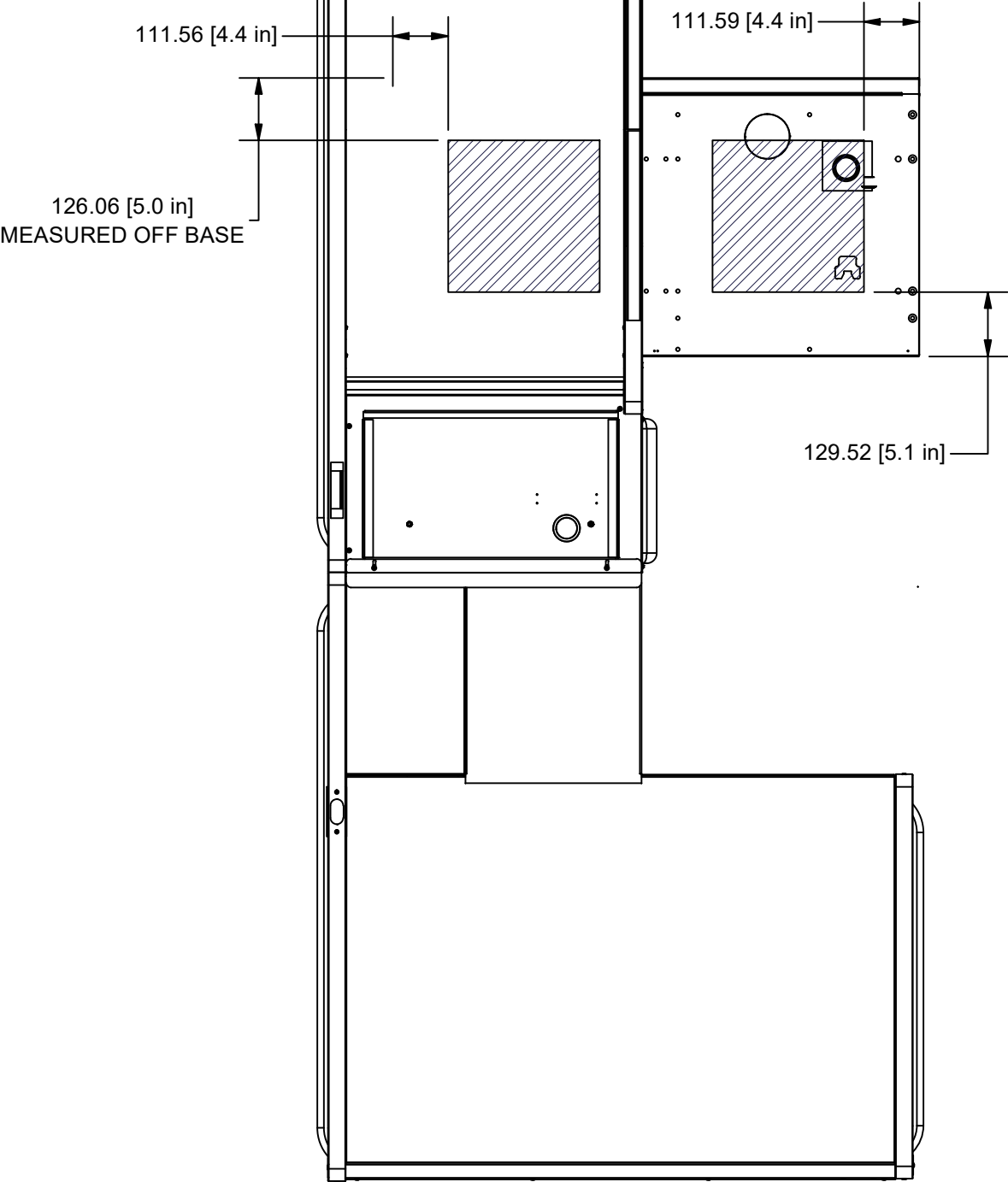
EZ FLEX SCAN AND BAG



CASHIER SIDE



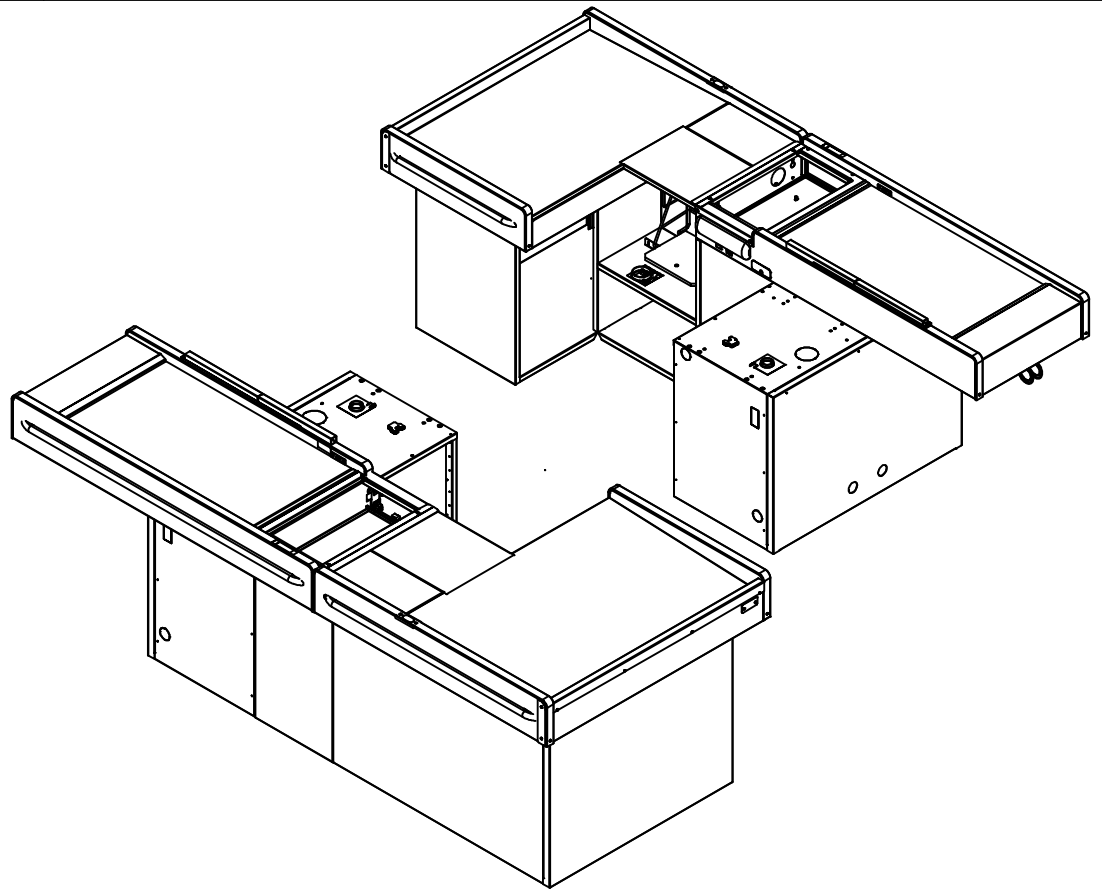
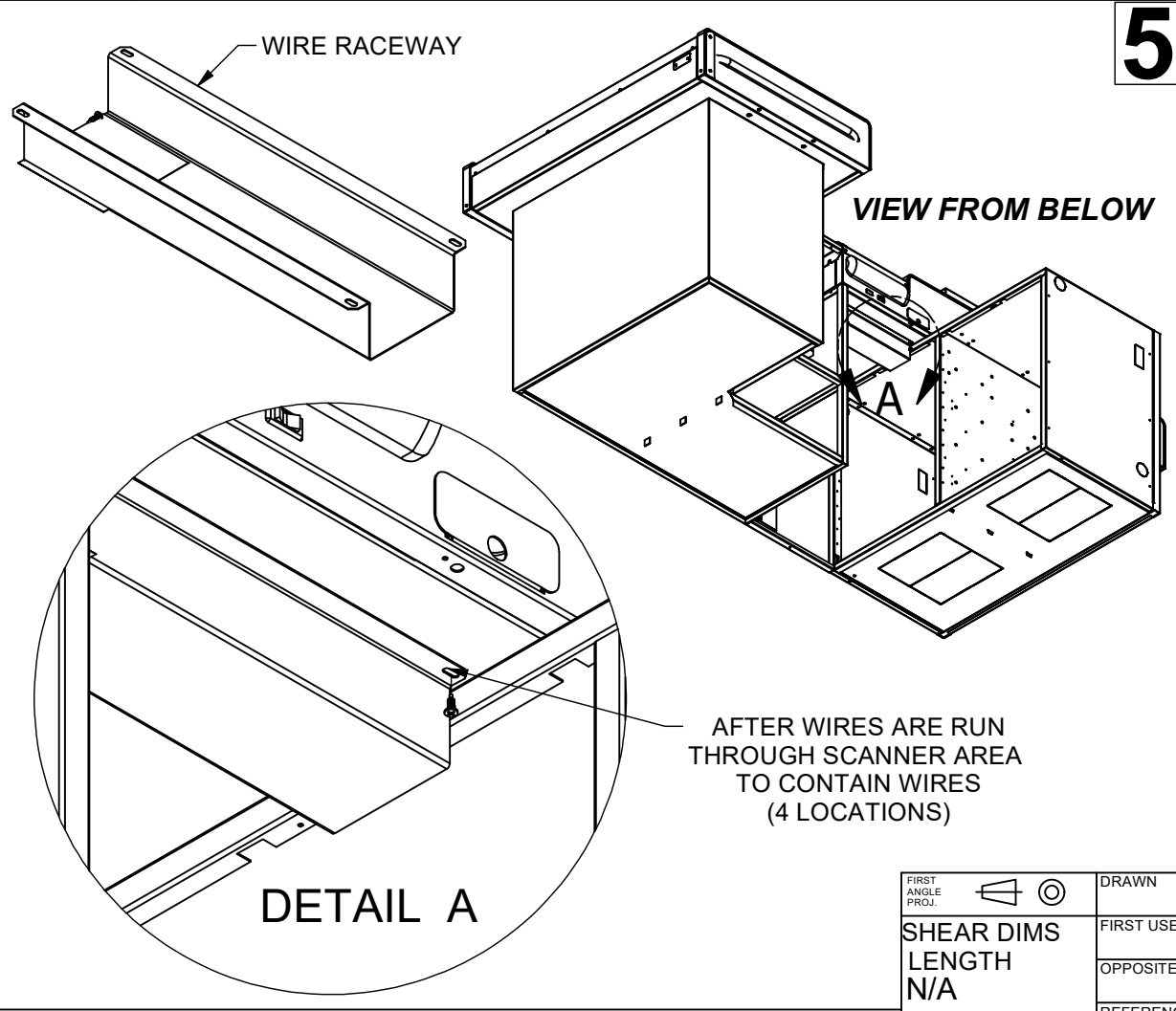
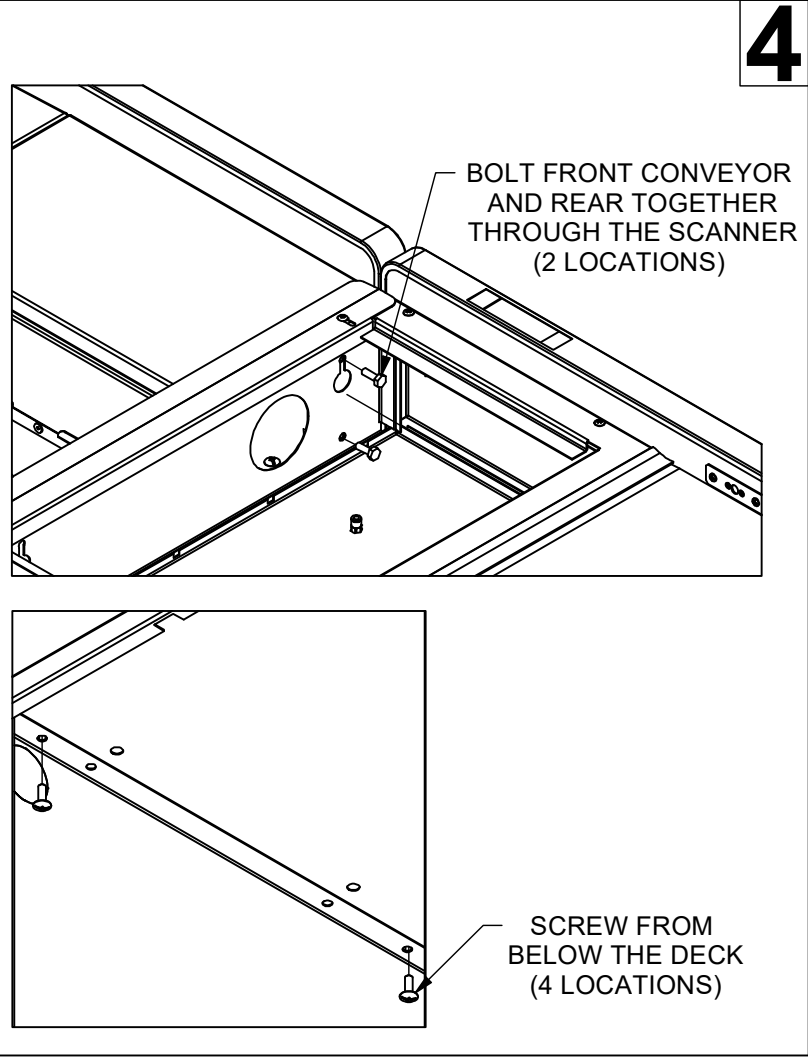
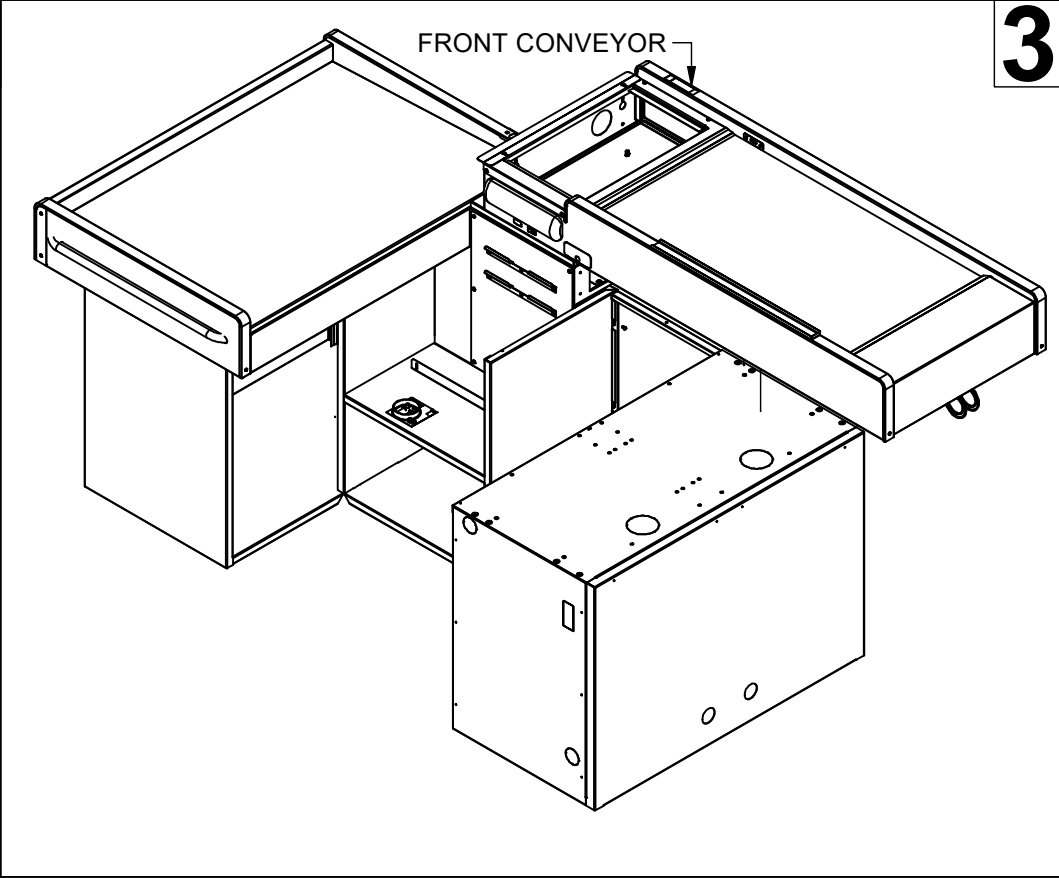
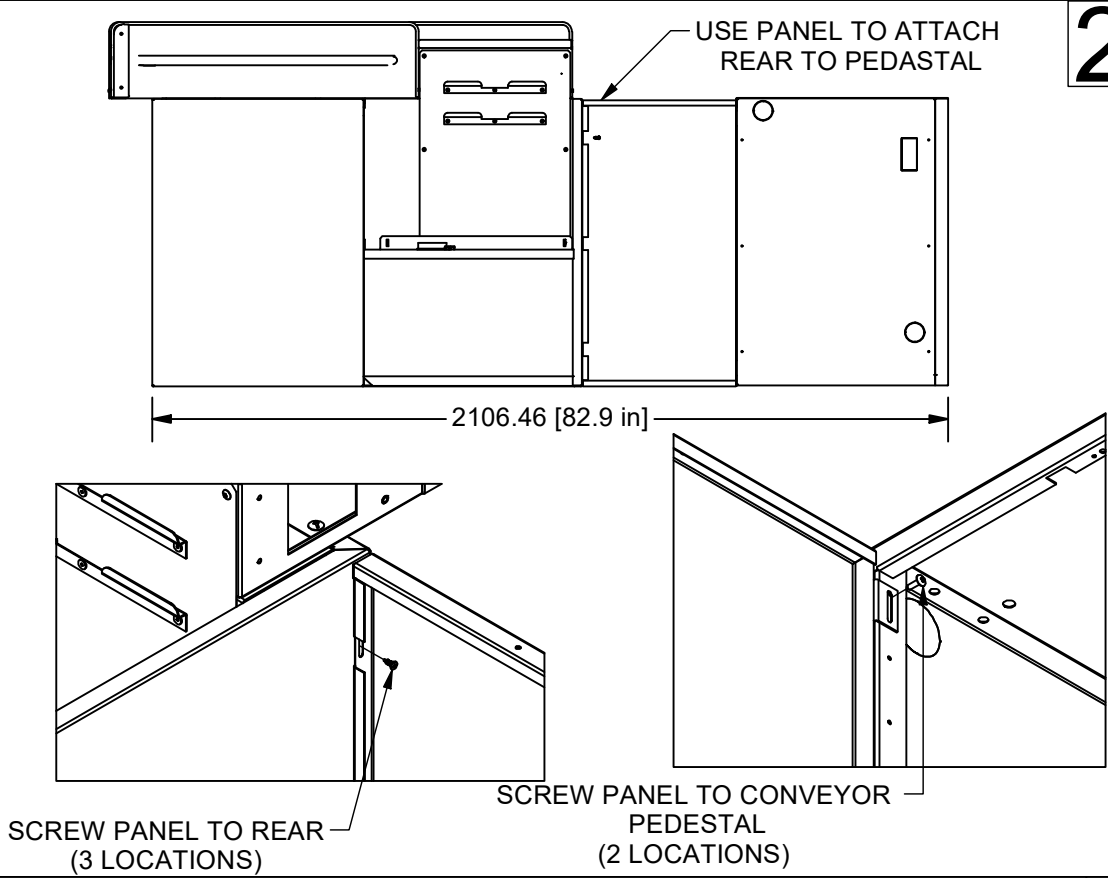
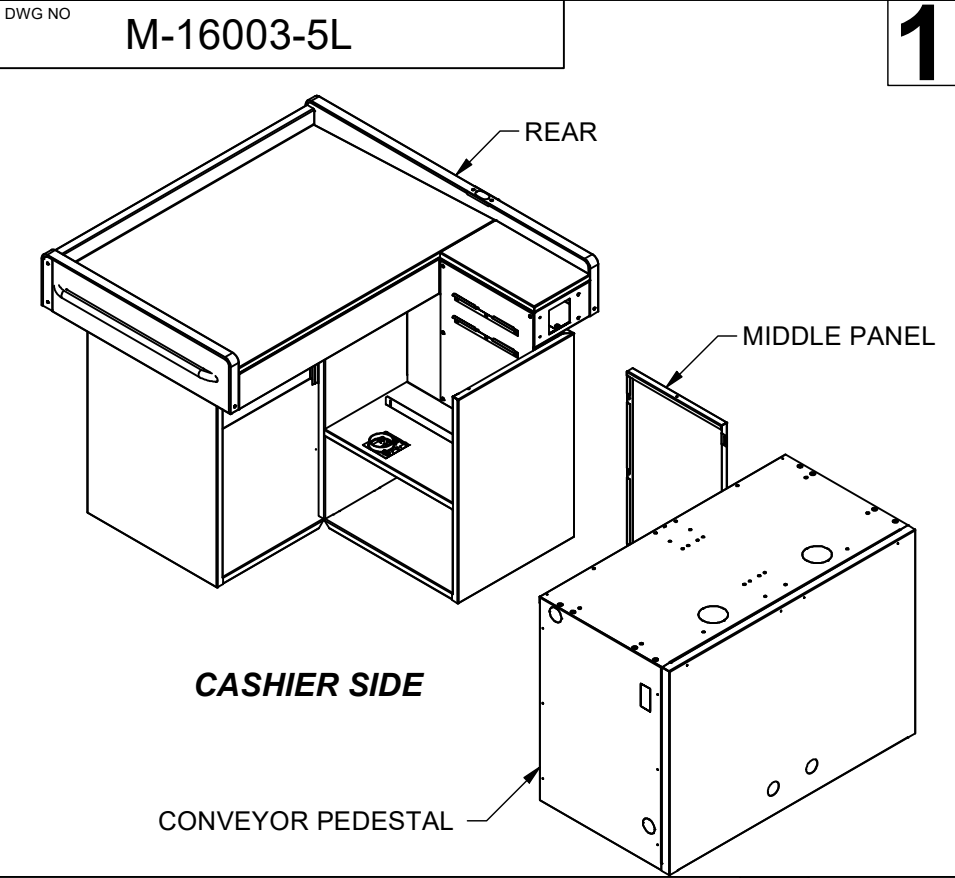
CUSTOMER SIDE



STUB UP AREA

The contents of this drawing are the exclusive property of Pan-Oston, and are for the use of the customer for whom they were created. Any reproduction or disclosure thereof without the written consent of Pan-Oston, is strictly prohibited.

FIRST ANGLE PROJ.		DRAWN	5/20/2025	ALL DIMENSIONS ARE IN MILLIMETERS, ANSI Y14.5 ST. STL. PARTS PAPERSIDE UP UNLESS OTHERWISE NOTED		
		FIRST USED		DESCRIPTION:		
		OPPOSITE DWG	Pan-Oston	EZ FLEX SCAN AND BAG		
		REFERENCE DWG		MATERIAL	DWG NO	REV
		PAINT ZONE		TITLE:		
SHEAR DIMS		Pan-Oston		SHIP		SHEET 1 OF 3
LENGTH						
N/A						
WIDTH						
N/A						

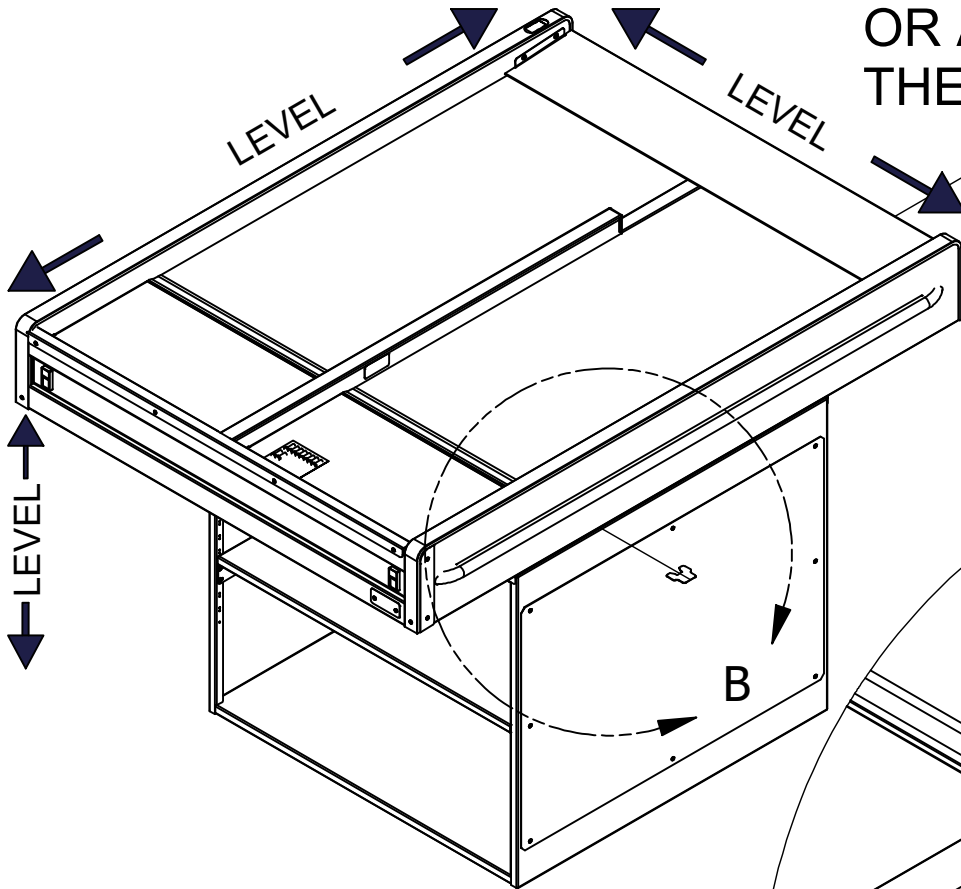


The contents of this drawing are the exclusive property of Pan-Oston, and are for the use of the customer for whom they were created. Any reproduction or disclosure thereof without the written consent of Pan-Oston, is strictly prohibited.

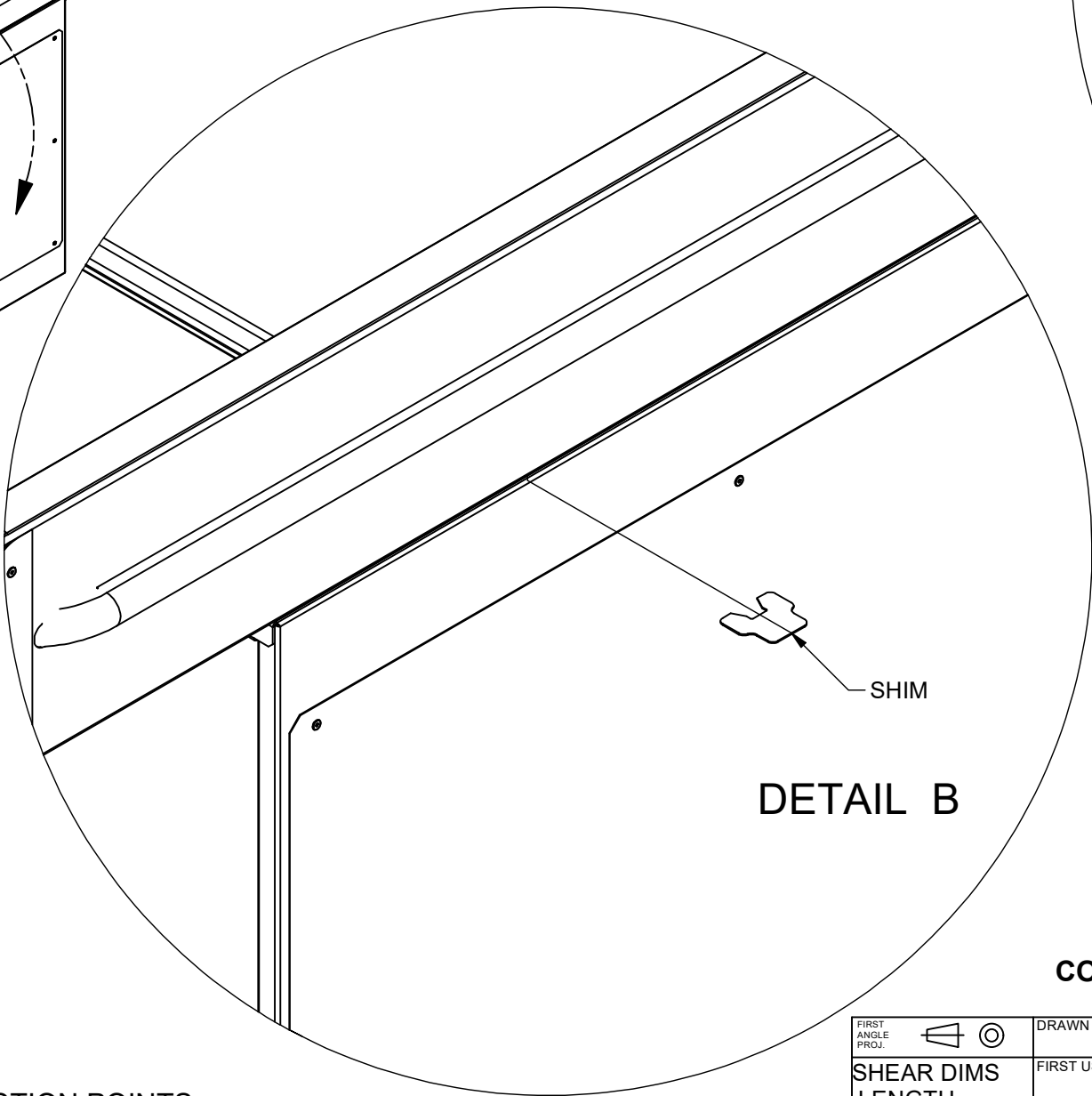
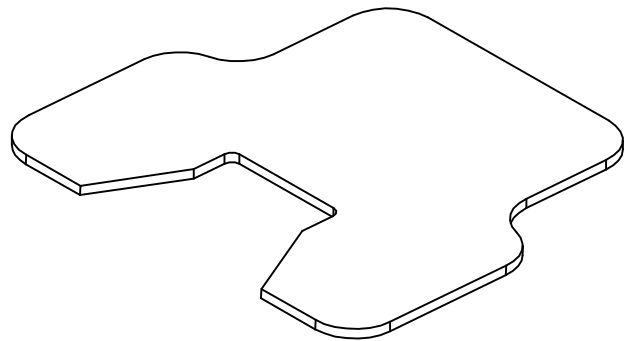
FIRST ANGLE PROJ.	DRAWN	5/20/2025	ALL DIMENSIONS ARE IN MILLIMETERS, ANSI Y14.5 ST. STL. PARTS PAPERSIDE UP UNLESS OTHERWISE NOTED	
SHEAR DIMS LENGTH N/A	FIRST USED		DESCRIPTION: EZ FLEX SCAN AND BAG	
WIDTH N/A	OPPOSITE DWG		MATERIAL	DWG NO
	REFERENCE DWG		TITLE: SHIP	
	PAINT ZONE		SHEET 2 OF 3	

LEVELING

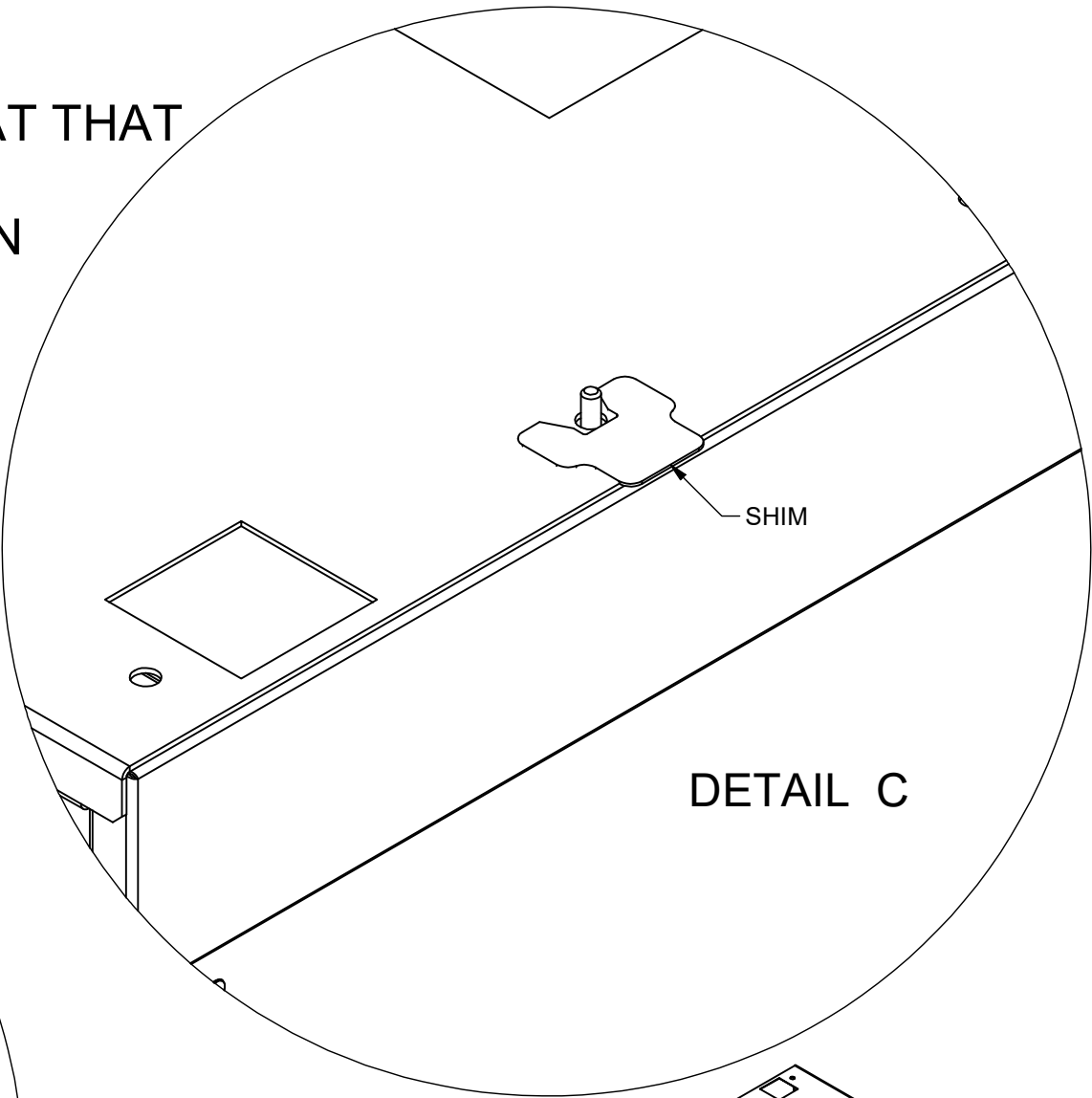
SHIMS GET PLACED BETWEEN CABINETS AT THEIR FASTENING POINTS, WHEN INSTALLING LOOSEN THE SCREW AT THAT CONNECTION POINT AND SLIDE THE SHIM OR AS MANY THAT ARE NEEDED BETWEEN THE CABINETS UNTIL THEY ARE LEVEL



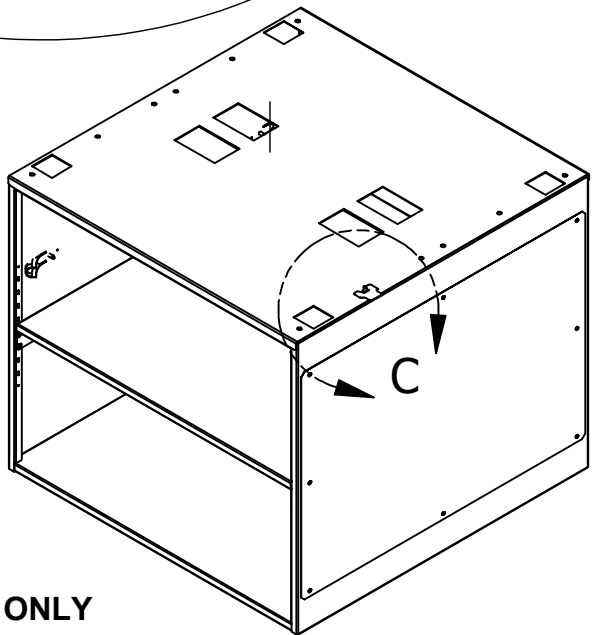
SHIM



DETAIL B



DETAIL C



C

CONVEYOR IS USED AS EXAMPLE ONLY

PLACE SHIMS BETWEEN CABINETS AT CONNECTION POINTS

The contents of this drawing are the exclusive property of Pan-Oston, and are for the use of the customer for whom they were created. Any reproduction or disclosure thereof without the written consent of Pan-Oston, is strictly prohibited.

<div>FIRST ANGLE PROJ.</div> <div>SHEAR DIMS LENGTH N/A</div> <div>WIDTH</div>	<div></div>	DRAWN	6/24/2025	ALL DIMENSIONS ARE IN MILLIMETERS, ANSI Y14.5 ST. STL. PARTS PAPERSIDE UP UNLESS OTHERWISE NOTED	
		FIRST USED		DESCRIPTION: EZ FLEX INSTALLATION	
		OPPOSITE DWG		MATERIAL	DWG NO
		REFERENCE DWG		TITLE: LANE SETUP	
		PAINT ZONE		SHEET 3 OF 3	

Pan-Oston

INSTALLATION INSTRUCTIONS

- 1 From floor plan determine distances (A&B) from left rear corner of rear cabinet of 1st check stand to walls at left and rear. Mark floor with magic marker. Repeat process for right rear corner of rear cabinet of last check stand in run. Make chalk lines between marks (See FIGURE 2)
- 2 Without attaching components, move rear cabinet, front conveyor and cash stand into position as shown in FIGURE 2. Adjustable scanner filler angle is shipped installed in reverse position. Remove and install in correct position. Align front and rear cabinet on chalk line.
- 3 Repeat process for 2ND counter. Verify that correct aisle width (C) is maintained and that spacing to adjacent wall is correct.

Designates Best Locations for
Electrical Stub-ups

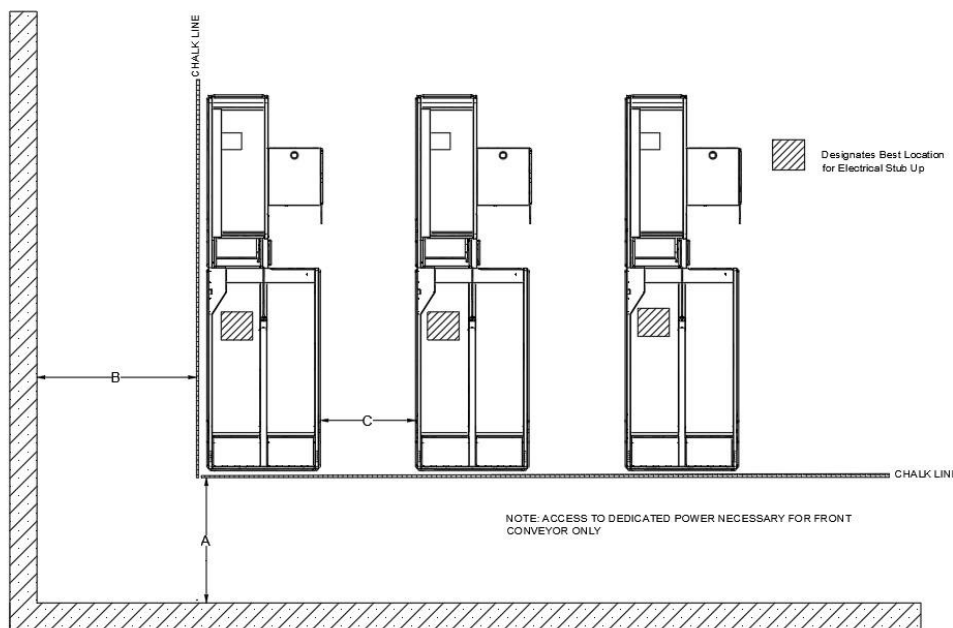


FIGURE 2

- 4 Make sure there are no physical obstructions, such as columns or doors, that would interfere with customer access to check stands. Check that regular & dedicated electrical service enters check stands from floor or above in proscribed areas. If problems are encountered, address them before proceeding.
- 5 Before proceeding to next step, check that cabinet is stable to floor and does not rock. If necessary, use leveling bolts or insert shims to stabilize. Recommendation is to anchor rear cabinets by use of 100% silicone caulk.

INSTALLATION INSTRUCTIONS - Continued

WARNING: IF SHOOTING INTO FLOOR TO ANCHOR FRONT CONVEYOR OR REAR CABINET, AVOID SHOOTING OR DRILLING INTO WIRING DUCT.

- 6 TO ANCHOR REAR CABINETS BY SHOOTING TO FLOOR, REMOVE THE COVER PLATES IN THE FLOOR PANEL TO ACCESS BASE FLANGE. IF IT WAS NECESSARY TO USE SHIMS TO STABILIZE REAR CABINET, SHOOT THROUGH SHIMS BETWEEN CABINET BASE AND FLOOR.
- 7 MOVE FRONT CONVEYOR TO PROPER LOCATION. VERIFY THAT REAR CABINET ALIGNS PROPERLY WITH FRONT CONVEYOR.
- 8 REMOVE FRONT CONVEYOR SIDE ACCESS PANEL SCREWS. PLACE ACCESS PANEL BUMPER RAIL SIDE DOWN ON CONVEYOR BELT. LOOSEN TOP LOCK NUTS AND ADJUST (4) LEVELING JACKS INSIDE CONVEYOR TO ALIGN WITH REAR CABINET.
- 9 BEFORE ANCHORING FRONT CONVEYOR TO FLOOR, MAKE CERTAIN THAT FRONT CONVEYOR IS LEVEL, STABLE, & PROPERLY ALIGNED ON SETTING LINE. TIGHTEN LOCK NUTS ON FRONT CONVEYOR LEVELING JACKS.
- 10 REMOVE WIRING DIAGRAM THAT IS ATTACHED TO ELECTRICAL CONTROL BOX IN FRONT CONVEYOR AND GIVE TO INSTALLING ELECTRICIAN. DRAWING SHOWS PROPER CONNECTIONS FOR INCOMING POWER SOURCES.
- 11 INSTRUCT SCANNER INSTALLER THAT SCANNER IS MADE FLUSH WITH FRONT CONVEYOR SCANNER TRIM BY ADJUSTMENT OF SCANNER LEGS OR SCANNER SUPPORT BRACKETS, NOT BY ADJUSTMENT OF SCANNER TRIM.
- 12 POSITION CASH STAND MODULE AGAINST SIDEWALL OF CONVEYOR AS SHOWN IN DIMENSIONED DRAWING, OR PER MANAGEMENT INSTRUCTION.
- 13 DETERMINE CABLE ROUTING(S) FROM CASH STAND INTO FRONT CONVEYOR, REMOVE APPROPRIATE KNOCKOUTS, AND INSERT PLASTIC BUSHINGS IF SUPPLIED FROM CASH STAND UTILITY DRAWER IN CASH STAND TOP DECK.
- 14 ATTACH CASH STAND TO CONVEYOR WITH SELF DRILLING SCREWS. AVOID DRILLING INTO ELECTRICAL SYSTEM OR MOTOR CABLE.
- 15 INSTALL ALL ACCESSORIES, THIS INCLUDES KEYBOARD TRAY, CHECK WRITING SHELF, EFT HOLDER AND WHERE APPLICABLE, EXTERNAL BAGGING UNIT.
- 16 AFTER ELECTRICIAN HAS COMPLETED WIRING TO CHECK-STAND, AND AFTER COMPLETION OF SCANNER INSTALLATION, REPLACE CONVEYOR ACCESS PANEL ON FRONT CONVEYOR.
- 17 PHYSICAL INSTALLATION IS NOW COMPLETE. TEST CHECK-STANDS AND ADJUST BELT TRACKING IF NECESSARY.
- 18 STRIP OFF ALL TEMPORARY PROTECTIVE COVERINGS AND THOROUGHLY CLEAN ALL LANES. REFER TO *MAINTENANCE & CLEANING* IN THE MANUAL. IF COUNTERS ARE NOT TO BE USED FOR AN EXTENDED PERIOD, INSTRUCT CONSTRUCTION SUPERVISOR TO PROVIDE PROTECTIVE COVERINGS. PAN-OSTON WARRANTY DOES NOT COVER DAMAGE TO COUNTERS OR CONVEYOR BELTS DAMAGED IN STORE AFTER DELIVERY AND PRIOR TO GRAND OPENING.